

No: 37485 11 January 2021 Hrs: 10:00
Labour Force Statistics, October 2020

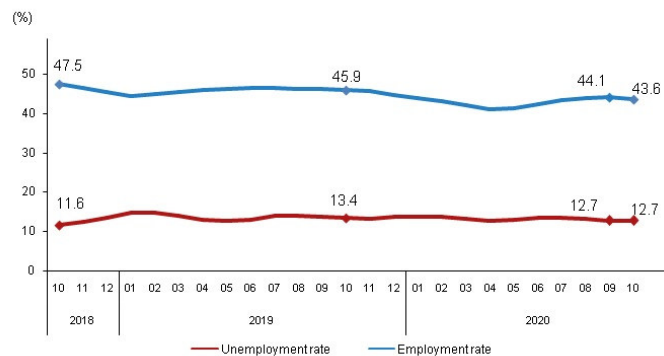
Unemployment rate realized as 12.7%

The number of unemployed persons aged 15 years old and over decreased by 391 thousand to 4 million 5 thousand persons in the period of October 2020 in Turkey compared with the same period of the previous year. The unemployment rate occurred as 12.7% with 0.7 percentage point decrease. Non-agricultural unemployment rate occurred as 14.8% with 0.9 percentage point decrease.

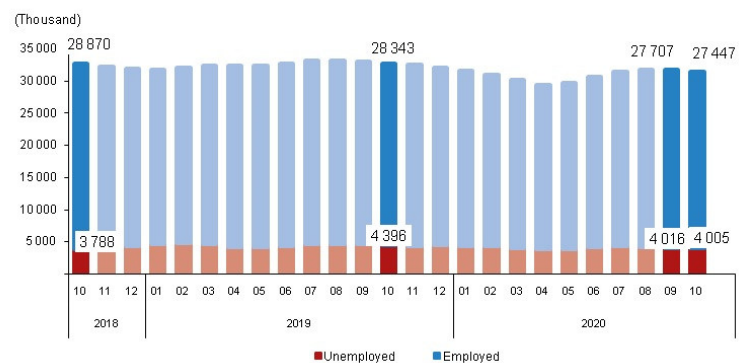
Employment rate realized as 43.6%

The number of employed persons decreased by 896 thousand to 27 million 447 thousand persons in the period of October 2020 compared with the same period of the previous year. The employment rate occurred as 43.6% with 2.3 percentage point decrease.

Unemployment and employment rate, October 2018-October 2020



Unemployed and employed, October 2018-October 2020



In this period, the number of agricultural employment decreased by 242 thousand persons, industry decreased by 82 thousand persons and services decreased by 684 thousand persons while construction increased by 110 thousand persons. According to the distribution of employment by sector; 17.6% was employed in agriculture, 20.3% was employed in industry, 6.4% was employed in construction and 55.7% was employed in services.

Labour force participation rate realized as 50.0%

The number of persons in the labour force realized 31 million 452 thousand persons with 1 million 288 thousand persons decrease in the period of October 2020 compared with the same period of the previous year. Labour force participation rate was 50.0% with 3.0 percentage point decrease.

Non-seasonally adjusted main labour force indicators, 15 + age, (Thousand), October 2019, October 2020

	Total			Male			Female		
	2019	2020	Difference	2019	2020	Difference	2019	2020	Difference
Population	61 756	62 935	1 179	30 511	31 154	643	31 245	31 781	536
Labour force	32 740	31 452	-1 288	21 935	21 510	-425	10 805	9 942	-863
Employment	28 343	27 447	-896	19 377	19 046	-331	8 966	8 401	-565
Agriculture	5 077	4 835	-242	2 824	2 852	28	2 252	1 983	-269
Industry	5 666	5 584	-82	4 327	4 267	-60	1 339	1 318	-21
Construction	1 638	1 748	110	1 571	1 684	113	67	64	-3
Services	15 963	15 279	-684	10 655	10 243	-412	5 308	5 036	-272
Unemployment	4 396	4 005	-391	2 557	2 464	-93	1 839	1 541	-298
Not in the labour force	29 016	31 483	2 467	8 576	9 645	1 069	20 440	21 839	1 399
Labour force participation rate (%)	53.0	50.0	-3.0	71.9	69.0	-2.9	34.6	31.3	-3.3
Employment rate (%)	45.9	43.6	-2.3	63.5	61.1	-2.4	28.7	26.4	-2.3
Unemployment rate (%)	13.4	12.7	-0.7	11.7	11.5	-0.2	17.0	15.5	-1.5
Non-agricultural unemployment rate (%)	15.7	14.8	-0.9	13.2	12.9	-0.3	21.4	19.2	-2.2

Figures in table may not add up to totals due to rounding.

The rate of unregistered employment realized as 31.0%

The ratio of persons working without any social security relating to the main job occurred 31.0% with 3.9 percentage point decrease in the period of October 2020 compared with the same period of the previous year. The rate of unregistered employment realized as 19.9% with 3.6 percentage point decrease in the non-agricultural sector compared to the same period of the previous year.

For 15-64 age group, unemployment rate realized as 13.0% and employment rate realized as 48.5%

For the 15-64 age group, the unemployment rate occurred as 13.0% with 0.7 percentage point decrease and non-agricultural unemployment rate occurred as 14.9% with 0.9 percentage point decrease compared to the same period of the previous year. In this age group, employment rate occurred as 48.5% with 2.0 percentage point decrease and labour force participation rate occurred as 55.7% with 2.9 percentage point decrease.

Non-seasonally adjusted main labour force indicators, 15-64 age group, (%), October 2019, October 2020

	Total			Male			Female		
	2019	2020	Difference	2019	2020	Difference	2019	2020	Difference
Labour force participation rate	58.6	55.7	-2.9	78.1	75.6	-2.5	39.0	35.6	-3.4
Employment rate	50.5	48.5	-2.0	68.8	66.8	-2.0	32.2	30.0	-2.2
Unemployment rate	13.7	13.0	-0.7	11.9	11.6	-0.3	17.4	15.8	-1.6
Non-agricultural unemployment rate	15.8	14.9	-0.9	13.3	12.9	-0.4	21.6	19.3	-2.3

Youth unemployment rate realized as 24.9%, employment rate realized as 30.6%

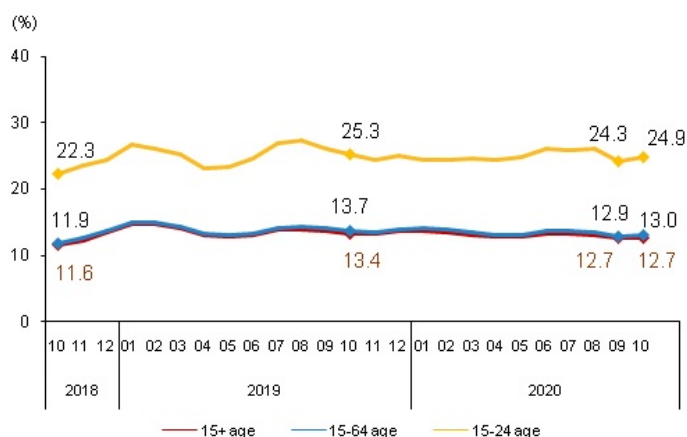
The youth unemployment rate between aged 15-24 years realized as 24.9% with 0.4 percentage point decrease and the youth employment rate realized as 30.6% with 2.2 percentage point decrease compared with the same period of the previous year. In the same period, labour force participation rate realized as 40.8% with 3.0 percentage point decrease. The rate of neither in employment nor in education realized as 27.6% with 1.6 percentage point increase compared with the same period of the previous year.

Non-seasonally adjusted main labour force indicators, 15-24 age group, (%), October 2019, October 2020

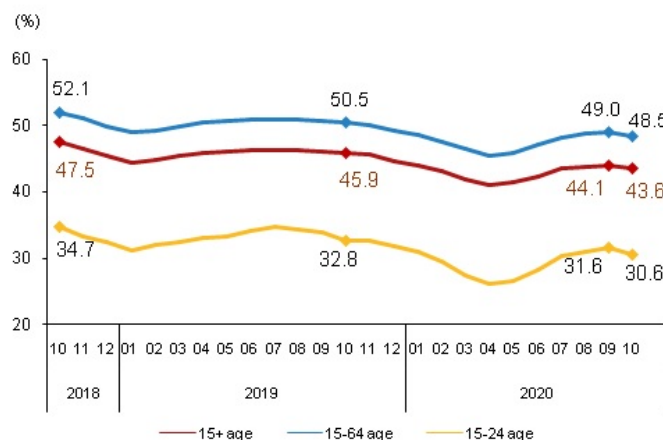
	Total			Male			Female		
	2019	2020	Difference	2019	2020	Difference	2019	2020	Difference
Labour force participation rate	43.8	40.8	-3.0	55.2	52.3	-2.9	32.1	28.7	-3.4
Employment rate	32.8	30.6	-2.2	43.3	40.9	-2.4	21.9	19.9	-2.0
Unemployment rate	25.3	24.9	-0.4	21.6	21.8	0.2	31.8	30.7	-1.1
The rate of neither in employment nor in education ⁽¹⁾	26.0	27.6	1.6	17.9	20.7	2.8	34.3	34.9	0.6

(1) The rate of young people neither in employment nor in education (formal and informal) in total youth population.

Unemployment rate, October 2018-October 2020



Employment rate, October 2018-October 2020

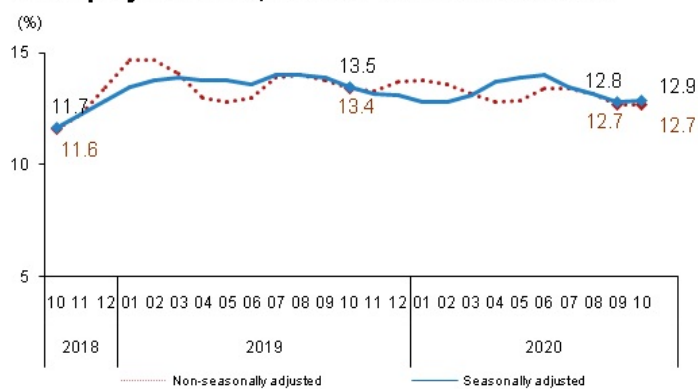


Seasonally adjusted unemployment rate realized as 12.9%, employment rate realized as 43.2%

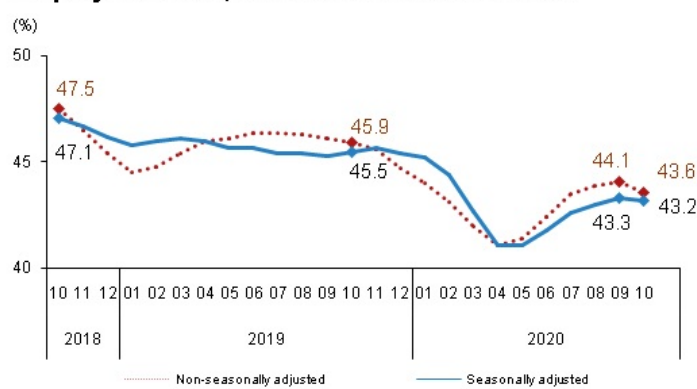
Seasonally adjusted unemployment rate realized as 12.9% with 0.1 percentage point increase. The number of unemployed persons increased by 39 thousand to 4 million 13 thousand persons.

Seasonally adjusted employment rate realized as 43.2% with 0.1 percentage point decrease. The number of employed persons estimated as 27 million 191 thousand persons with one thousand persons increase compared with the same period of the previous year.

Unemployment rate, October 2018-October 2020



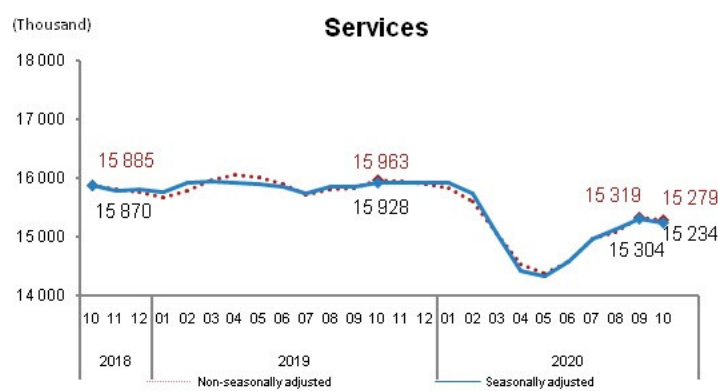
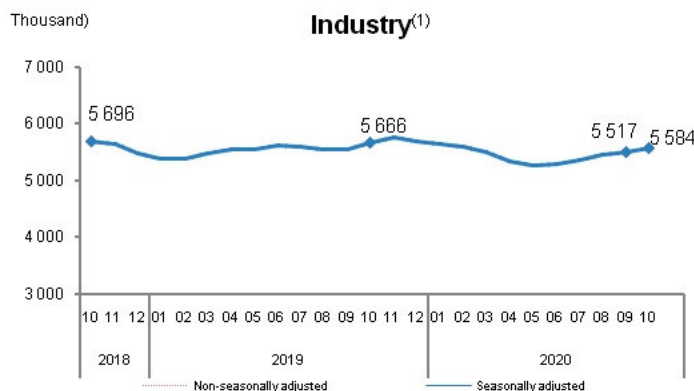
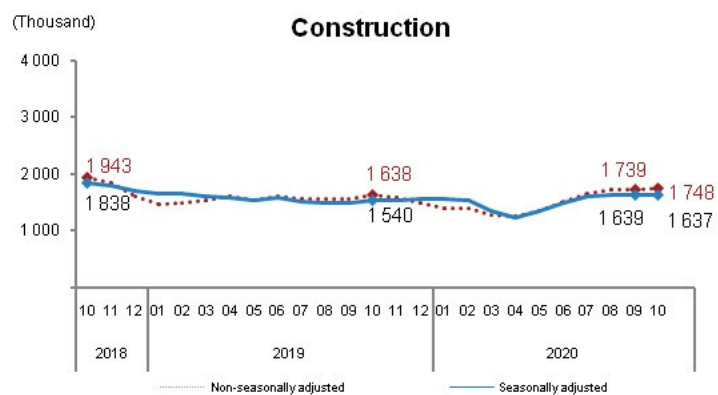
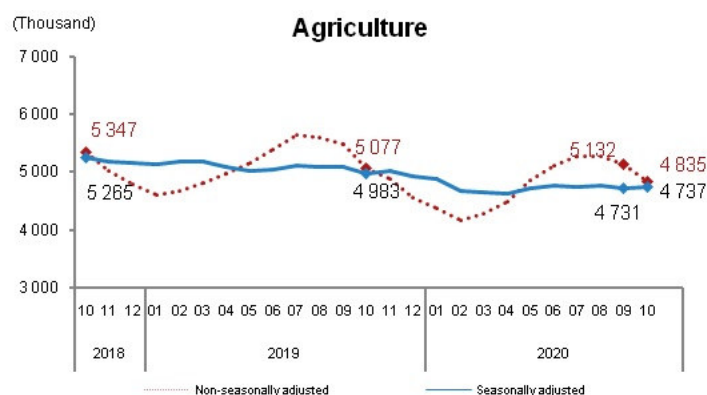
Employment rate, October 2018-October 2020



Seasonally adjusted labour force participation rate was 49.6% without any change. The number of labour force estimated as 31 million 204 thousand persons with 40 thousand persons increase.

According to the seasonally adjusted number of employment by sectors, employment in agriculture increased by 6 thousand persons and industry increased by 67 thousand persons while construction decreased by 2 thousand persons and services decreased by 70 thousand persons.

Employment by sectors, October 2018 - October 2020



(1) No seasonal effect was observed in the industrial sector.

General Profile of Labour Force, October 2020

Indicators	Number (Thousand)	(%)	Compared with the same period of the previous year	
			Difference (Thousand)	Change (%)
Population (15+ age)	62 935	100.0	1 179	1.9
Labour force	31 452	50.0	-1 288	-3.9
Employed	27 447	43.6	-896	-3.2
Unemployed	4 005	6.4	-391	-8.9
Not in labour force	31 483	50.0	2 467	8.5
Sector	27 447	100.0	-896	-3.2
Agriculture	4 835	17.6	-242	-4.8
Industry	5 584	20.3	-82	-1.4
Construction	1 748	6.4	110	6.7
Services	15 279	55.7	-684	-4.3
Employment status	27 447	100.0	-896	-3.2
Regular or casual employee	19 260	70.2	-305	-1.6
Employer	1 226	4.5	-20	-1.6
Self employed	4 407	16.1	-231	-5.0
Unpaid family worker	2 553	9.3	-341	-11.8
Occupation	27 447	100.0	-896	-3.2
Managers	1 526	5.6	-72	-4.5
Professionals	3 323	12.1	73	2.2
Technicians and associate professionals	1 739	6.3	28	1.6
Clerical support workers	1 818	6.6	-135	-6.9
Service and sales workers	5 211	19.0	-501	-8.8
Skilled agricultural, forestry and fishery workers	3 628	13.2	-348	-8.8
Craft and related trades workers	3 594	13.1	80	2.3
Plant and machine operators and assemblers	2 474	9.0	-163	-6.2
Elementary occupations	4 134	15.1	141	3.5
Duration of unemployment	4 005	100.0	-391	-8.9
1-2 months	1 267	31.6	-367	-22.5
3-5 months	827	20.6	-202	-19.6
6-8 months	612	15.3	232	61.1
9-11 months	197	4.9	-5	-2.5
1 year and more	1 102	27.5	-49	-4.3
Status before seeking a job	4 005	100.0	-391	-8.9
Job was temporarily	1 330	33.2	-301	-18.5
Dismissed	539	13.5	-25	-4.4
Quit the job by own initiative	651	16.3	-45	-6.5
Liquidated/Bankrup	202	5.0	-7	-3.3
Was working as unpaid family worker	11	0.3	2	22.2
Retired	102	2.5	-16	-13.6
Was in education or training	600	15.0	50	9.1
Just completed his military service	88	2.2	-18	-17.0
Busy with household chores	342	8.5	-97	-22.1
Other	137	3.4	63	85.1
Previous economic activity	4 005	100.0	-391	-8.9
Agriculture	200	5.0	-38	-16.0
Industry	668	16.7	-63	-8.6
Construction	434	10.8	-91	-17.3
Services	2 227	55.6	-148	-6.2
Those who quitted job before the last 8 years	146	3.6	-41	-21.9
First time job seekers	329	8.2	-11	-3.2
The reason for not in labour force	31 483	100.0	2 467	8.5
Not seeking a job but available to start	4 348	13.8	2 173	99.9
Discouraged	1 511	4.8	843	126.2
Other	2 837	9.0	1 330	88.3
Seasonal worker	82	0.3	2	2.5
Household chores	10 002	31.8	-1 547	-13.4
Education/Training	4 432	14.1	-51	-1.1
Retired	4 752	15.1	-244	-4.9
Disabled, old or ill	5 016	15.9	1 112	28.5
Other	2 851	9.1	1 021	55.8

The next release on this subject will be on February 10, 2021.

EXPLANATIONS

In the period of October 2020, results published in this press release includes 36th-48th weeks period including September, October and November 2020.



TS37485

For technical information: Yosun KATI
Telephone: +90 312 454 77 54
e.mail: yosunkati@tuik.gov.tr

For information request: Data Dissemination Group
Telephone: +90 312 454 72 53
e.mail: info@tuik.gov.tr

/ tuikstat
 / tuikstat